

H&S Care Learning Journey

Skills

Year 11 "Becoming KS5 Ready"

- Develop synthesis of knowledge and skill in understanding and interpreting the health and wellbeing of individuals.
- Develop problem-solving and decision-making skills relevant to the health of individuals.
- Investigate, analyse and evaluate how the impact of factors can change over the life course and explore the ways in which different individuals cope with and adapt to change.
- Refine investigation, critical analysis and research skills in the application of reports.

Year 10 "Developing into Independent Learners"

- Develop and apply sector-specific applied knowledge and skills through realistic vocational contexts
- Develop problem-solving and decision-making skills relevant to HSC
- Continue to make connections between aspects of health and wellbeing
- Investigate, analyse and evaluate careers in HSC
- Work as individuals as well as in groups using both qualitative and quantitative data including its selection, interpretation, analysis and evaluation, and the application of appropriate quantitative skills in drawing meaningful conclusions in your HSC studies.

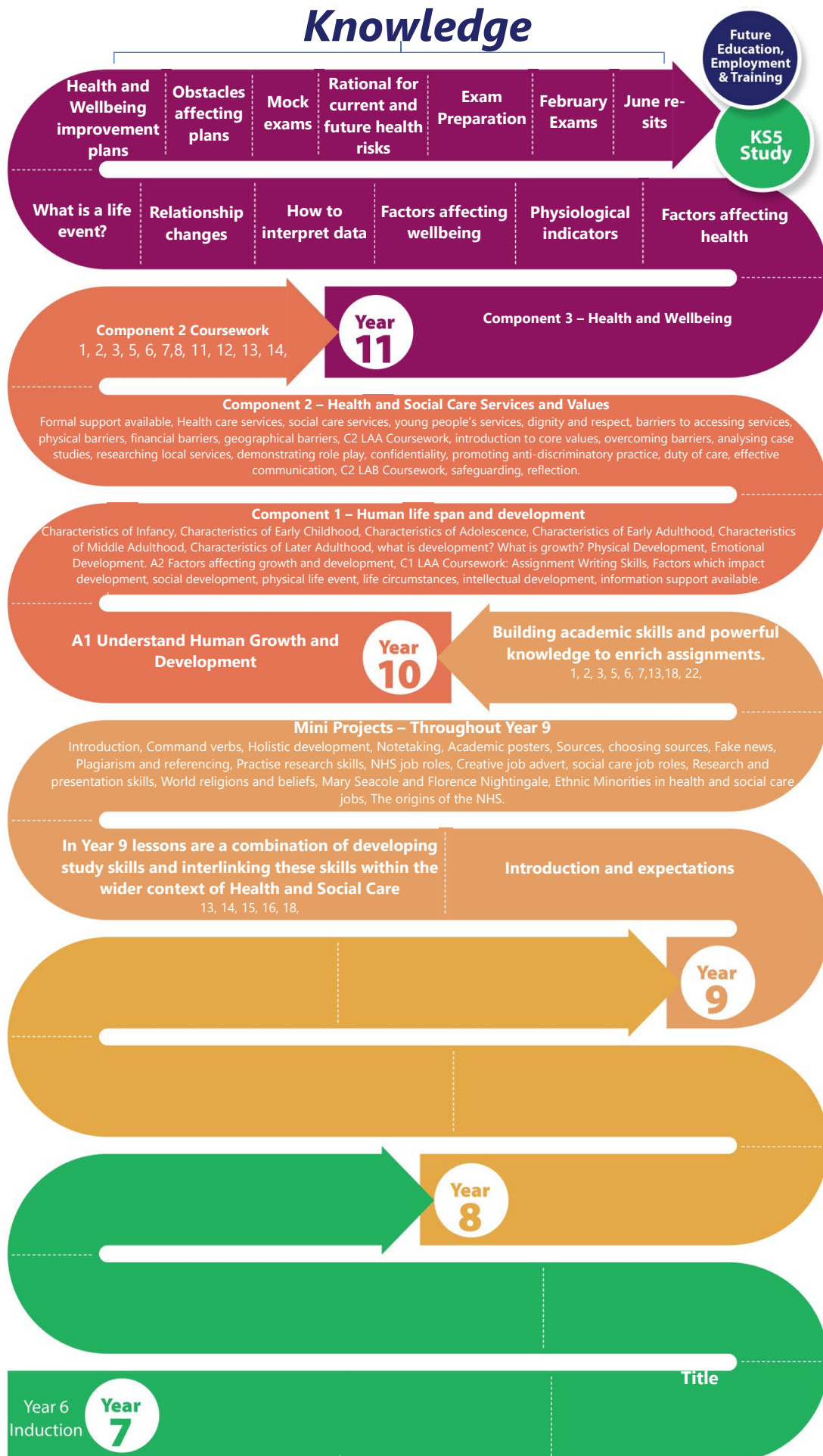
Year 9 "Developing Skills to Enhance Learning"

- Introduce Subject terminology
- Apply knowledge and understanding to a given scenario-case study
- Make connections between aspects of health and wellbeing
- Develop problem-solving and decision-making skills relevant to a HSC context
- Investigate, analyse and evaluate the positives and negative impacts of a life event on health and wellbeing.
- Make justified decisions using both subject knowledge and secondary research to support analysis of given scenario.

Year 8 "Taking Responsibility for Learning"

Year 7 "Transition to High School"

Knowledge



Skills

Year 13

"Are you Fit for FEET?"

- ✓ Continued understanding of assessment objectives and how to approach a variety of
 - ✓ To continue to develop organisation and self-regulation skills by working independently to complete NEA tasks to meet
 - ✓ To develop communication skills through collaborative group work
 - ✓ To build on research skills from Year 12 through independent tasks.
 - ✓ To develop evaluative skills through informed reflection.
 - ✓ Deepen and refine investigation, critical analysis and research skills in the application of reports in preparation for higher education or employment.
- P D:** 1, 2, 3, 5, 6, 7, 8, 11, 12, 13, 14, 15, 18, 22, 23, 24, 27, 28.



Year 12

"Introduction to A-Level Mindset"

- ✓ To develop organisation of ideas and time to complete extended writing assignment and meet deadlines
 - ✓ To develop research skills for given brief and topic area
 - ✓ To understand the requirements of a brief and produce an independent extended piece of
 - ✓ Understanding of how to answer exam questions and the demands of each assessment objective.
- P D:** 1, 2, 3, 5, 6, 7, 8, 11, 12, 13, 14, 15, 18, 22, 23, 24,



Knowledge

Unit 4

This will take the form of an optional unit (NEA) TBC
Health, Policy and Wellbeing or Promoting Health Education or Safe Environments in Health and Social Care or Health Science

Future Education, Employment & Training

Unit 3: Principles of Health and Social Care Practice (mandatory unit-NEA)

Unit 3 will focus on the principles that underpin meeting the care and support needs of individuals, which are the foundation of all services within health and social care.

A: Understand the principles of health and social care practice which underpin meeting the care and support needs of individuals. Person-centred care and approaches, communication, confidentiality and duty of care. Working with vulnerable children and adults at risk.

B: Examine how organisation, legislation and guidance inform practice in health and social care. Roles and responsibilities of key organisations, Organisation of health and social care services, How health and social care services are organised to benefit the population.

C. Examine how social determinants affect the health status of individuals and the importance of equality, diversity and inclusion in practice. You will learn about the effect of social determinants on individuals' health status, consider social and environmental factors affecting health status and health outcomes, understand equality, diversity and discrimination in relation to the approach of professionals in health and social care practice, and how inclusive practice may impact on health outcomes. Gain an awareness of potential barriers to improving health outcomes in practice and the impact of pandemics on health outcomes.

The learning and knowledge acquired will accumulate in an extended writing piece (NEA)

Year 13

Transferable skills: knowledge and skills embedded throughout the units include:

Organisational and critical thinking skills. Interpersonal skills required when working with others, including compassion and empathy. Responsibilities of professionals to be adaptable and innovative in delivering care. Management of own time and learning Academic skills such as research.

The main disorders of the body systems

You learn about the impacts of common health disorders and the impact on body systems to include: coronary heart disease, stroke, Diabetes – type 1 and type 2, Dementia – Alzheimer's disease and vascular dementia, Cancer: breast, bowel and lung.

Unit 2 Human Biology-exam

Students explore the organisation, structure and normal physiological functioning of the human body, and the effect on health of common disorders of the body systems. you will gain knowledge of the structure, organisation and function of the human body and common disorders that affect it. Be able to make connections between the primary and secondary effects of common disorders and how they affect interlinked body systems. Organisation of the human body, Cells and Functions. Organ systems, and function of the main tissue types. Energy metabolism, cellular respiration and uses of energy in the body. Homeostatic mechanisms - The structure and role of the nervous, immune and musculoskeletal Systems.

Unit 1 Human Lifespan Development Exam

C: Health and social care promotion, prevention and treatment at different life stages. You will explore Health and social care promotion and prevention. You will learn about the roles of the professionals involved in the care and treatment of an individual. The delivery of personalised care and involvement of professionals in multi-disciplinary working and multi-agency working practices.

Factors affecting human growth and development

B: Factors affecting human growth and development across each life stage: Genetic, Lifestyle and Health inequalities, including prevalent health conditions.

Unit 1 Human Lifespan - Exam & Development

A1-Learners will examine physical, intellectual, emotional and social development across the human lifespan, the interaction between biological and social factors in health and well-being and how health care professionals provide effective care.
B: Factors affecting human growth and development across each life stage: Genetic, Lifestyle and Health inequalities.

Year 12

Summer Preparation

Research skills: knowledge and understanding of job roles within the health and social care sector.

Introduction to HSC

Providing knowledge of the course content and assessment methodology. Development of research and referencing skills to support extended writing pieces.